



Floor Plans

By Thames Valley Housing



So Resi is a new way of making home ownership possible for more people. You buy a share of your home, with a lower deposit, smaller mortgage and monthly payment on the rest.

So Resi redefines shared ownership, by making everything clear and uncomplicated, so you understand how it all works at every stage, before and after you buy. Our So Resi homeowners are important to us and we aim to build strong, lasting relationships by being here to answer your questions in a language that makes sense.

So Resi is by Thames Valley Housing, a not-for-profit housing association. We have helped create over 14,500 homes in London and the South-east because we want everyone to have a chance to build their lives from a good home.

Development overview



Sat Nav location
RG41 1JT

So Resi Wokingham is one of the most anticipated developments in the area. Built by Bovis Homes and part of the larger Matthews Green Farm development, So Resi Wokingham will set the bar that little higher for shared ownership living.

Once complete residents of So Resi Wokingham will be able to take full advantage of onsite shops, enjoy the convenience of a brand new primary school, truly unwind within landscaped open spaces, take time with the kids in new play areas and enjoy being active with new pathways and cycle tracks.

Find out more on the Matthews Green Farm master plan www.matthewsgreenfarm.co.uk

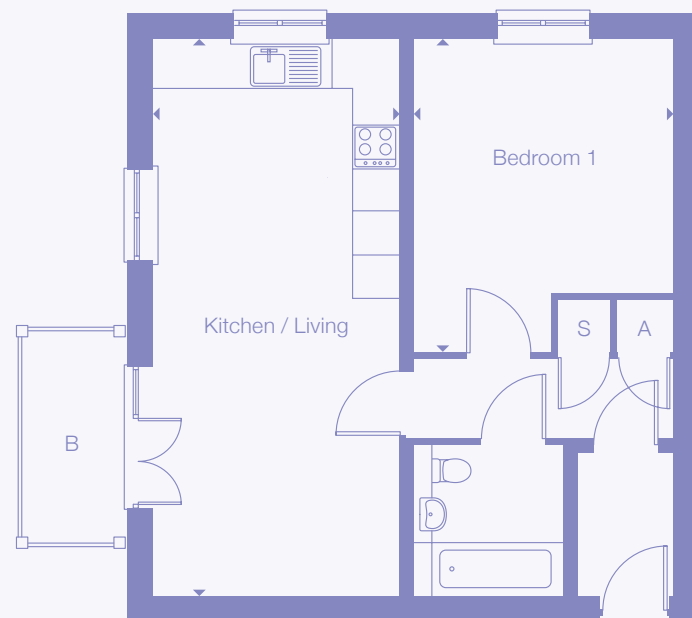
Key

- So Resi units
- Affordable rent units
- Parking
- Sub station
- Cycle & Bin store
- Sheds

The site layout is for general guidance only and is subject to change.

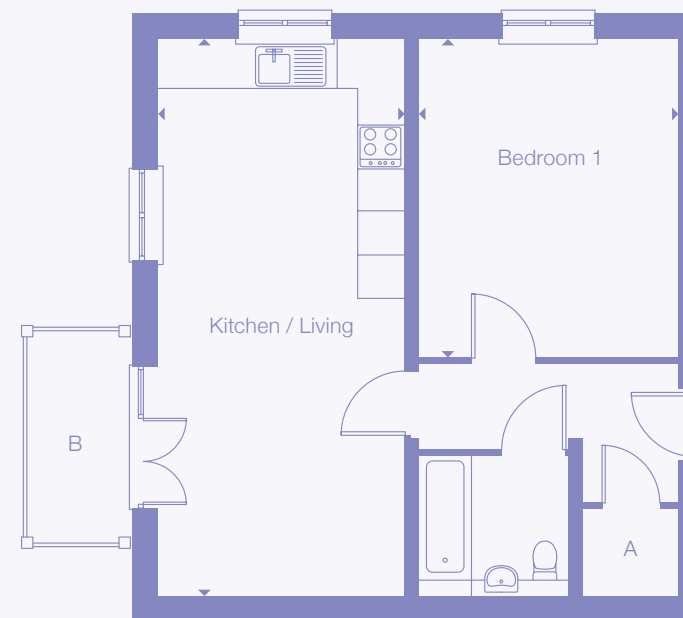


Type 1
1 Bedroom Apartment



Ground floor

Type 2
1 Bedroom Apartment



Plots
67

Room	Metric	Imperial
Kitchen / Living	3.3m x 7.6m	10'9" x 24'11"
Bedroom 1	3.5m x 4.2m	11'5" x 13'9"
GIA	50.5 m ²	544ft ²

- B Balcony/ Terrace
- S Storage
- A Airing Cupboard

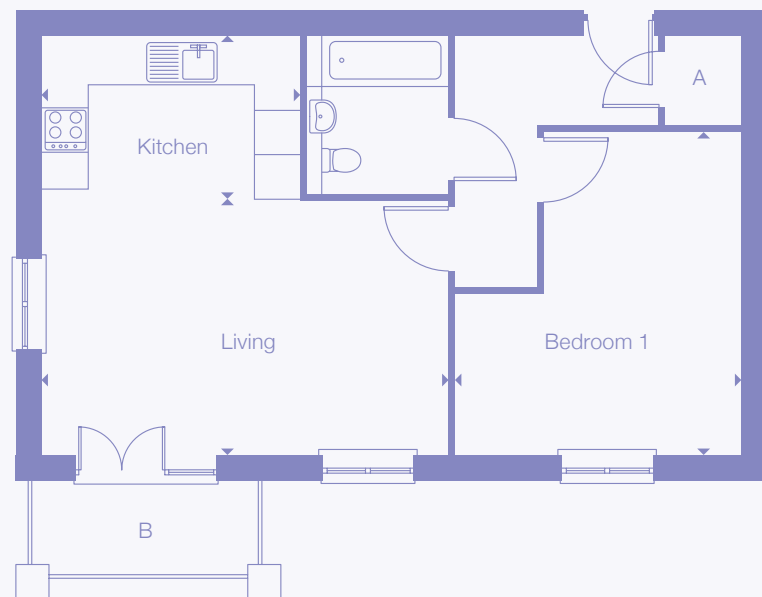
Plots
71*
75**

Room	Metric	Imperial
Kitchen / Living	3.3m x 7.6m	10'9" x 24'11"
Bedroom 1	3.5m x 4.3m	11'5" x 14'1"
GIA	54 m ²	581ft ²

- * First floor
- ** Second floor
- B Balcony/ Terrace
- A Airing Cupboard

All floor plans in this brochure are for general guidance only. All room dimensions are subject to a plus/minus 5% tolerance. Measures are from plans and "as built" dimensions may vary. Sizes of balconies vary between apartments of the same type. Any dimensions shown are not intended to be used for carpet sizes, appliances, spaces or items of furniture. These particulars do not constitute any part of an offer or contract.

Type 3
1 Bedroom Apartment



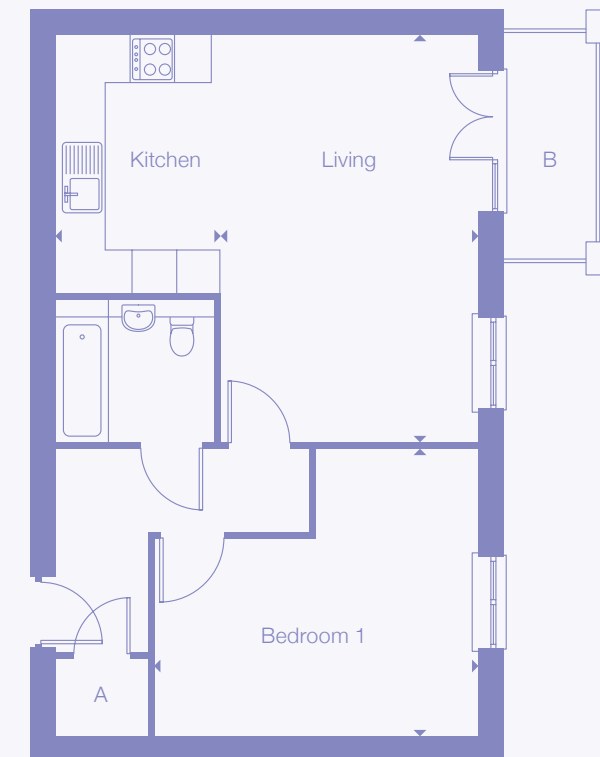
Second floor

Plots
78

Room	Metric	Imperial
Living	5.5m x 3.4m	18'0" x 11'1"
Kitchen	3.5m x 2.2m	11'5" x 7'2"
Bedroom 1	4.0m x 4.3m	13'1" x 14'1"
GIA	54.4 m ²	586ft ²

- B Balcony/ Terrace
- A Airing Cupboard

Type 4
1 Bedroom Apartment



Plots
72*
76**

Room	Metric	Imperial
Living	3.4m x 5.5m	11'1" x 18'0"
Kitchen	2.2m x 3.5m	7'2" x 11'5"
Bedroom 1	4.3m x 4.0m	14'1" x 13'1"
GIA	54.4 m ²	586ft ²

- * First floor
- ** Second floor
- B Balcony/ Terrace
- A Airing Cupboard

Type 5
2 Bedroom
Apartment



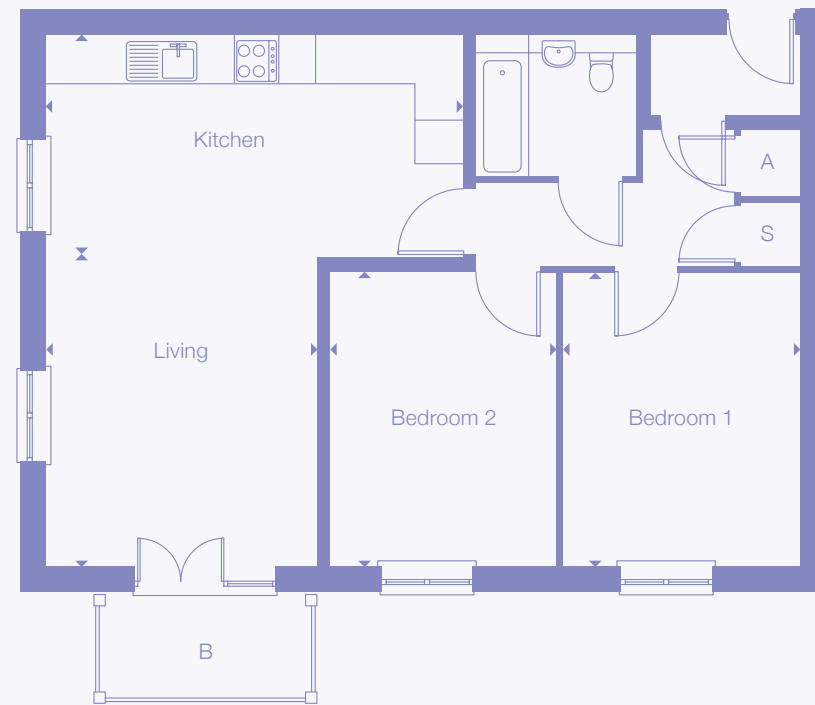
Ground floor

Plots
68

Room	Metric	Imperial
Living	4.1m x 3.8m	13'5" x 12'5"
Kitchen	3.2m x 5.8m	10'6" x 19'0"
Bedroom 1	4.0m x 3.2m	13'1" x 10'6"
Bedroom 2	4.0m x 3.1m	13'1" x 10'2"
GIA	71.2 m ²	767ft ²

- B Balcony/ Terrace
- S Storage
- A Airing Cupboard

Type 6
2 Bedroom
Apartment



Ground floor

Plots
70

Room	Metric	Imperial
Living	3.7m x 4.2m	12'1" x 13'9"
Kitchen	5.6m x 3.0m	18'4" x 9'10"
Bedroom 1	3.3m x 4.0m	10'9" x 13'1"
Bedroom 2	3.0m x 4.0m	9'10" x 13'1"
GIA	71.2 m ²	767ft ²

- B Balcony/ Terrace
- S Storage
- A Airing Cupboard

All floor plans in this brochure are for general guidance only. All room dimensions are subject to a plus/minus 5% tolerance. Measures are from plans and "as built" dimensions may vary. Sizes of balconies vary between apartments of the same type. Any dimensions shown are not intended to be used for carpet sizes, appliances, spaces or items of furniture. These particulars do not constitute any part of an offer or contract.

Type 7
2 Bedroom Apartment



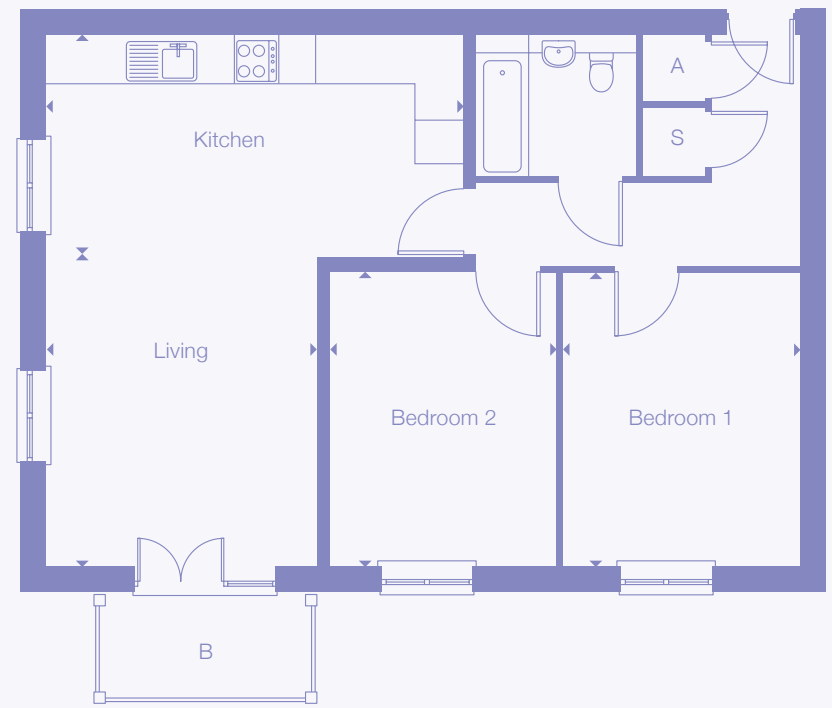
Ground floor

Plots
69

Room	Metric	Imperial
Living	4.4m x 3.2m	14'5" x 10'6"
Kitchen	6.8m x 2.3m	22'3" x 7'6"
Bedroom 1	3.3m x 4.0m	10'9" x 13'1"
Bedroom 2	4.5m x 3.9m	14'9" x 12'9"
GIA	70.9 m ²	763ft ²

- B Balcony/ Terrace
- A Airing Cupboard

Type 8
2 Bedroom Apartment



First floor

Plots
74

Room	Metric	Imperial
Living	3.7m x 4.2m	12'1" x 13'9"
Kitchen	5.6m x 3.0m	18'4" x 9'10"
Bedroom 1	3.3m x 4.0m	10'9" x 13'1"
Bedroom 2	3.0m x 4.0m	9'10" x 13'1"
GIA	75 m ²	807ft ²

- B Balcony/ Terrace
- S Storage
- A Airing Cupboard

All floor plans in this brochure are for general guidance only. All room dimensions are subject to a plus/minus 5% tolerance. Measures are from plans and "as built" dimensions may vary. Sizes of balconies vary between apartments of the same type. Any dimensions shown are not intended to be used for carpet sizes, appliances, spaces or items of furniture. These particulars do not constitute any part of an offer or contract.

Type 9

2 Bedroom Apartment



Plots

73*
77**

Room	Metric	Imperial
Living	4.4m x 3.2m	14'5" x 10'6"
Kitchen	6.8m x 2.3m	22'3" x 7'6"
Bedroom 1	3.3m x 4.0m	10'9" x 13'1"
Bedroom 2	4.5m x 3.9m	14'9" x 12'9"
GIA	75.6 m ²	814ft ²

- * First floor
- ** Second floor
- [B] Balcony/Terrace
- [S] Storage
- [A] Airing Cupboard

All floor plans in this brochure are for general guidance only. All room dimensions are subject to a plus/minus 5% tolerance. Measures are from plans and "as built" dimensions may vary. Sizes of balconies vary between apartments of the same type. Any dimensions shown are not intended to be used for carpet sizes, appliances, spaces or items of furniture. These particulars do not constitute any part of an offer or contract.

Type 10

2 Bedroom



Plots

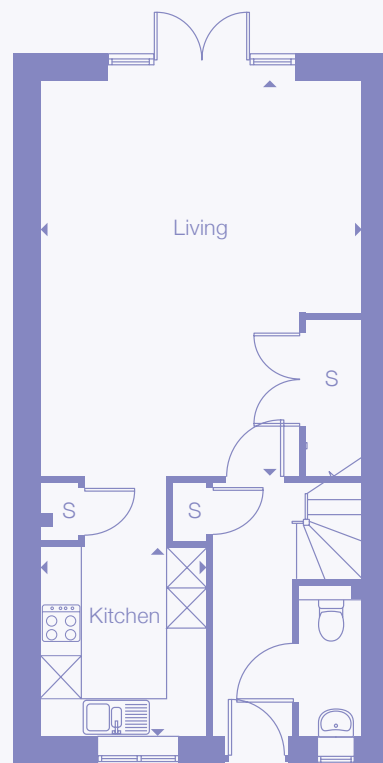
13, 14†, 15,
16†, 17, 18†

Room	Metric	Imperial
Living	4.7m x 4.3m	15'4" x 14'1"
Kitchen	2.6m x 3.0m	8'6" x 9'10"
Bedroom 1	4.7m x 3.6m	15'4" x 11'9"
Bedroom 2	4.7m x 3.0m	15'4" x 9'10"
GIA	83 m ²	893ft ²

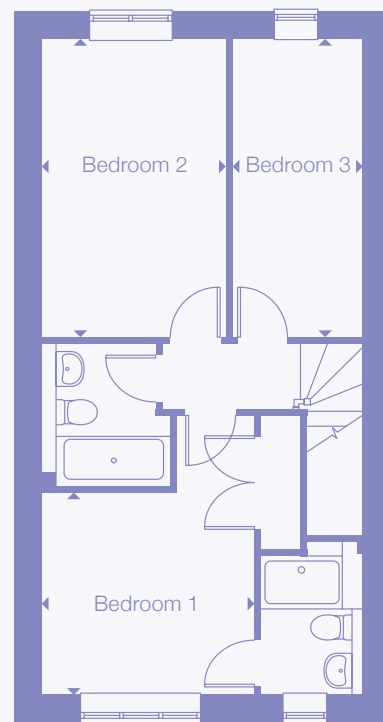
- † Denotes unit is handed.
- ‡ Denotes unit is handed with side bay window.
- [S] Storage

Type 11

3 Bedroom



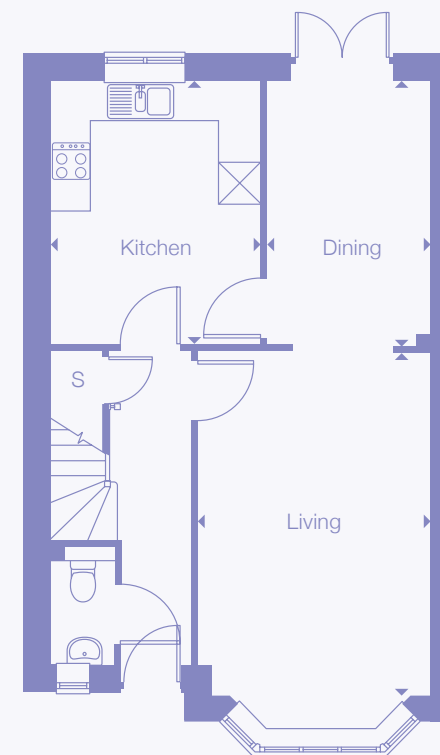
Ground floor



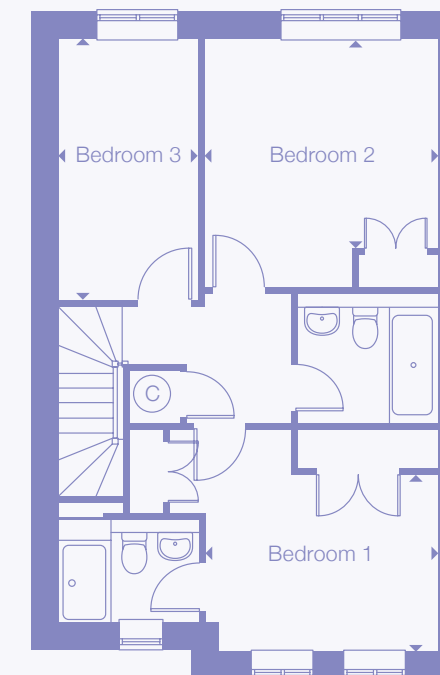
First floor

Type 12

3 Bedroom



Ground floor



First floor

Plots

32–34†
41, 42, 43,
44, 45†, 46,
47†, 48, 49†,
57†, 58

Room

Living
Kitchen
Bedroom 1
Bedroom 2
Bedroom 3
GIA

Metric

4.8m x 5.8m
2.5m x 2.8m
3.1m x 3.0m
2.7m x 4.4m
2.0m x 4.4m
92 m²

Imperial

15'9" x 19'0"
8'2" x 9'2"
10'2" x 9'10"
8'10" x 14'5"
6'6" x 14'5"
990ft²

† Denotes unit is handed.

S Storage

Plots

30, 35,
36–38†, 39,
40†, 52, 53†,
54†, 59, 60†,
62†, 63, 64†,
65, 66

Room

Living
Dining
Kitchen
Bedroom 1
Bedroom 2
Bedroom 3
GIA

Metric

3.4m x 5.0m
2.4m x 4.0m
3.0m x 3.9m
3.5m x 2.6m
3.5m x 3.1m
2.0m x 3.9m
101 m²

Imperial

11'4" x 16'4"
7'10" x 13'1"
9'10" x 12'9"
11'5" x 8'6"
11'5" x 10'2"
6'6" x 12'9"
1087ft²

† Denotes unit is handed.

C Cylinder
S Storage

All floor plans in this brochure are for general guidance only. All room dimensions are subject to a plus/minus 5% tolerance. Measures are from plans and "as built" dimensions may vary. Sizes of balconies vary between apartments of the same type. Any dimensions shown are not intended to be used for carpet sizes, appliances, spaces or items of furniture. These particulars do not constitute any part of an offer or contract.

Type 13

3 Bedroom



Ground floor

First floor

Type 14

3 Bedroom



Ground floor

First floor

Plots

31
61[†]

Room	Metric	Imperial
Living	4.6m x 3.8m	15'1" x 12'5"
Kitchen	4.7m x 3.3m	15'5" x 10'9"
Bedroom 1	2.6m x 3.2m	8'6" x 10'6"
Bedroom 2	2.6m x 3.8m	8'6" x 12'5"
Bedroom 3	2.1m x 3.8m	6'10" x 12'5"
GIA	101 m ²	1087ft ²

[†] Denotes unit is handed.

- © Cylinder
- S Storage

Plots

50[†], 51
55, 56

Room	Metric	Imperial
Living	5.3m x 3.9m	17'4" x 12'9"
Kitchen	3.2m x 3.2m	10'6" x 10'6"
Bedroom 1	2.9m x 4.7m	9'6" x 15'5"
Bedroom 2	3.0m x 4.0m	9'10" x 13'1"
Bedroom 3	2.4m x 3.4m	7'10" x 11'1"
GIA	93 m ²	1001ft ²

[†] Denotes unit is handed.

- S Storage
- Restricted height under stairs

Type 15

4 Bedroom



Ground floor

First floor

Second floor

Plots

19–21†,
22, 23†,
27†, 28†, 29†,
79†, 80
81†, 82†

Room

Living
Kitchen
Bedroom 1
Bedroom 2
Bedroom 3
Bedroom 4
GIA

Metric

4.4m x 5.4m
3.4m x 4.1m
4.4m x 3.3m
4.4m x 3.2m
4.4m x 3.5m
2.4m x 4.0m
129 m²

Imperial

14'5" x 17'8"
11'1" x 13'5"
14'5" x 10'9"
14'5" x 10'6"
14'5" x 11'5"
7'10" x 13'1"
1389ft²

† Denotes unit is handed with window to bathroom, not stairwell.

‡ Denotes unit is handed with side bay window to living room.

Ⓢ Cylinder

Ⓢ Storage

Type 16

4 Bedroom



Ground floor

First floor

Plots
24–26

Room

Living
Kitchen
Study
Bedroom 1
Bedroom 2
Bedroom 3
Bedroom 4
GIA

Metric

7.1m x 3.8m
2.9m x 4.6m
1.9m x 2.6m
3.4m x 3.3m
4.0m x 2.8m
2.9m x 3.3m
2.9m x 2.9m
120 m²

Imperial

23'3" x 12'5"
9'6" x 15'1"
6'2" x 8'6"
11'1" x 10'9"
13'1" x 9'2"
9'6" x 10'9"
9'6" x 9'6"
1292ft²

Ⓢ Cylinder

Ⓢ Storage

All floor plans in this brochure are for general guidance only. All room dimensions are subject to a plus/minus 5% tolerance. Measures are from plans and "as built" dimensions may vary. Sizes of balconies vary between apartments of the same type. Any dimensions shown are not intended to be used for carpet sizes, appliances, spaces or items of furniture. These particulars do not constitute any part of an offer or contract.



With So Resi, you buy your own home in your own way. You start with a share that's right for you, then you can buy extra shares over time, so it's all manageable and suits your income.

You start by buying between 25% and 75% of your So Resi home. That means your monthly mortgage payments and deposit are smaller than they would be if you bought your home outright. There are two other monthly payments for your So Resi home. One is the So Resi payment for the share of your home that Thames Valley Housing owns. The other is the service charge, which pays to look after the building you live in. There are also the usual other costs, like household utility bills. You can choose to buy a bigger share of your So Resi home in the future, and even own 100%. The bigger the share you own, the lower your So Resi payment will be.

You can sell your share at any time if you decide to move on.

We're here to help

Whatever your needs, we're on hand to help at every stage. First we'll help you understand all the costs and work out what's affordable for you. If you decide to go ahead, we'll be there to answer your questions. And in the future, we can help you with buying a bigger share of your home, or with selling up if it's time for a change.

**Email sales@soresi.co.uk
or visit www.soresi.co.uk**

Working in partnership with



TVH has taken all reasonable care in the preparation of the information given in this brochure. However, this information is subject to change and has been prepared solely for the purpose of providing general guidance. TVH does not warrant the accuracy or completeness of this information. Particulars are given for illustrative purposes only. TVH undertakes continuous product development and any information given relating to our products may vary from time to time. The information and particulars set out within this brochure do not constitute part of a formal offer invitation or contract to acquire the relevant property. For the reasons mentioned above, no information contained in this brochure is to be relied upon. In particular, all plans prospectus, descriptions, dimensions and measurements are approximate and provided for guidance only. Such information is given without responsibility on the part of TVH.

