



Making Home Ownership Possible

Floor Plans

By Thames Valley Housing



So Resi is a new way of making home ownership possible for more people. You buy a share of your home, with a lower deposit, smaller mortgage and monthly payment on the rest.

So Resi redefines shared ownership, by making everything clear and uncomplicated, so you understand how it all works at every stage, before and after you buy. Our So Resi homeowners are important to us and we aim to build strong, lasting relationships by being here to answer your questions in a language that makes sense.

So Resi is by Thames Valley Housing, a not-for-profit housing association. We have helped create over 14,500 homes in London and the South East because we want everyone to have a chance to build their lives from a good home.

Live near the waterside



Sat Nav location
TW8 8FE

So Resi Brentford is a distinctive collection of high-spec homes. Each home has its own sheltered outside space which extends the flow of open-plan living.

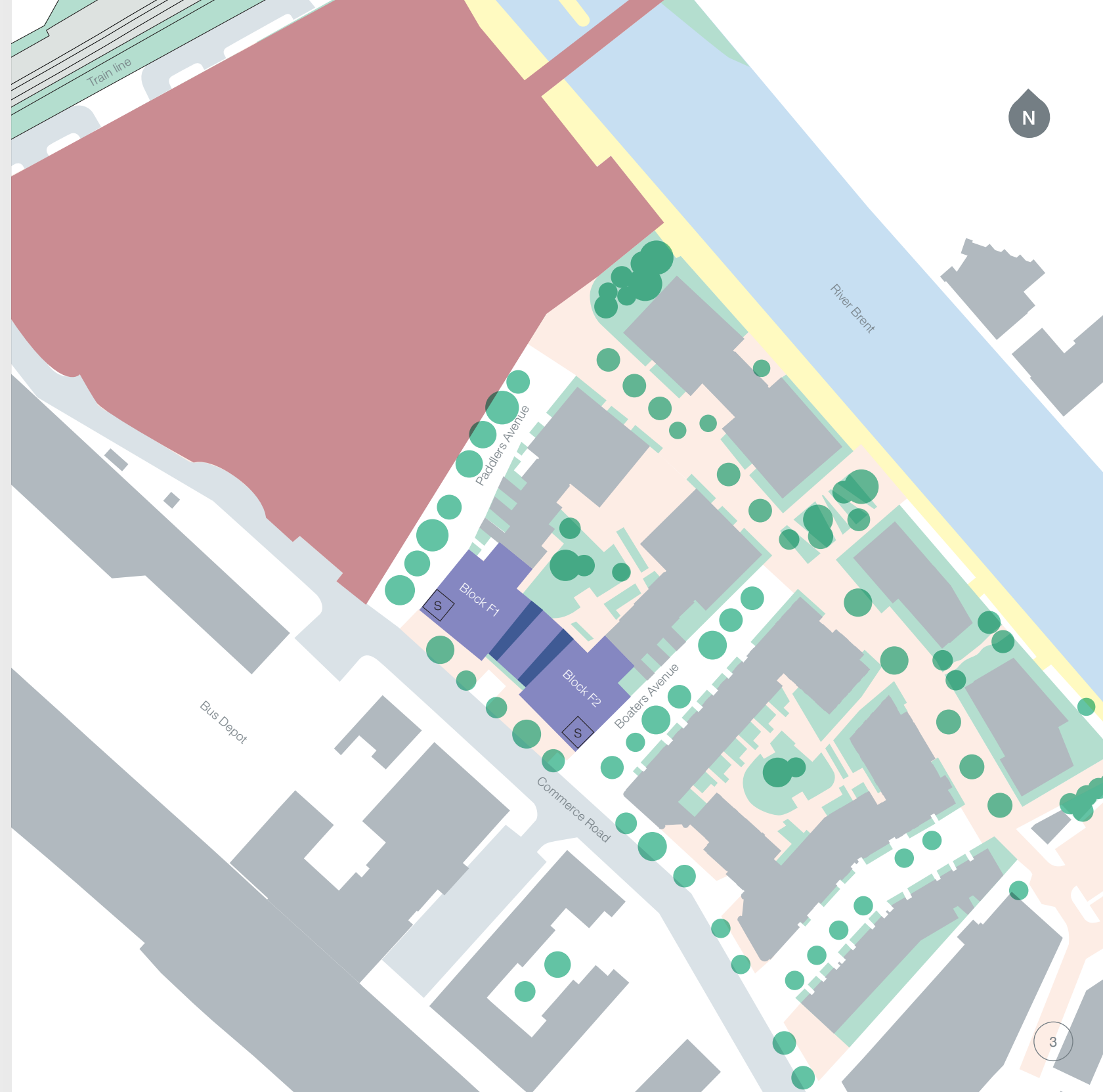
The apartments are arranged around a thoughtfully designed courtyard inspired by the peaceful canal-side location, where flowing walkways connect play areas and gardens.

These shared ownership apartments form part of a thriving development covering 11 acres of residential, commercial and retail space, with plans to offer an onsite café and amenities.

Key

- | | |
|------------------------------|---------------|
| So Resi units | Private units |
| Potential future development | Bin stores |
| Towpath | Substation* |
| Pedestrian areas | |

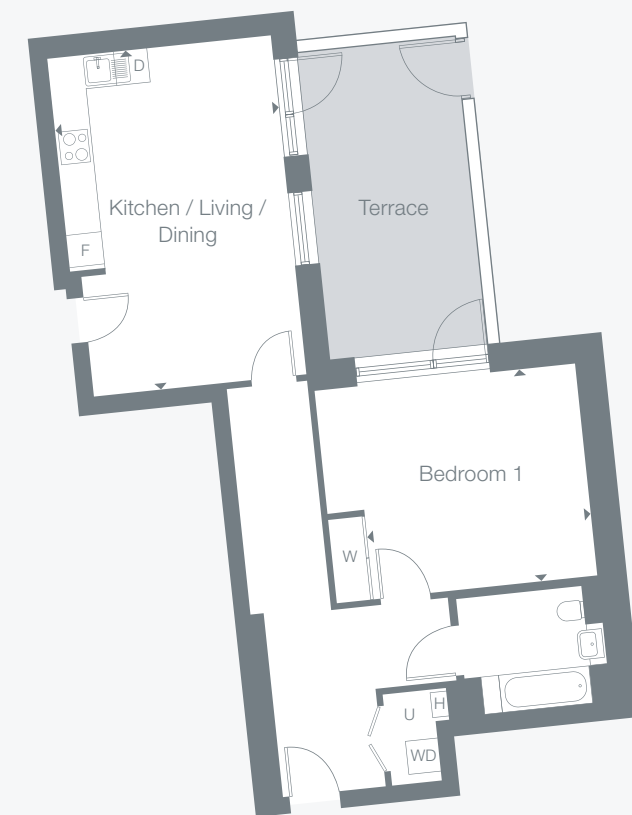
*Substation is located on the ground floor of the apartment block.
The site layout is intended for illustrative purposes only and is subject to change.





Key

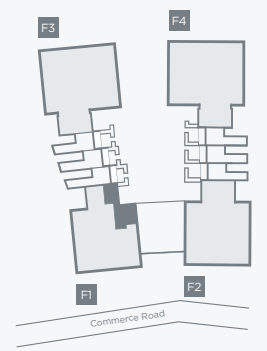
- Cycle store
- Lift
- Car parking space
- Car charging point



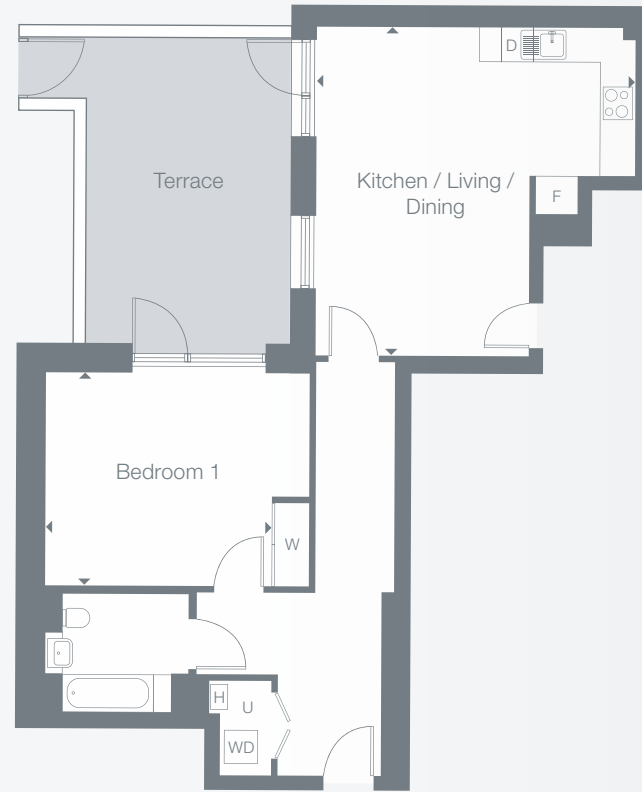
Plots	Block	Floor
F014	F1	G

Room	Metric	Imperial
Kitchen / Living / Dining	6.3m x 4.1m	20'7" x 13'7"
Bedroom 1	4.1m x 3.9m	13'8" x 12'11"
GIA	70m ²	753ft ²

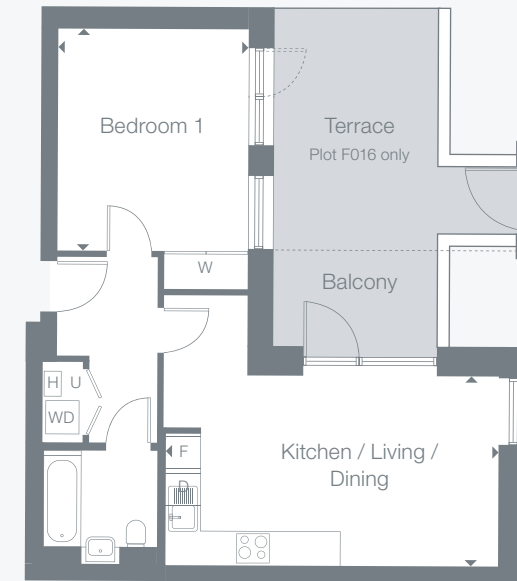
- D Dishwasher
- U Utility Cupboard
- F Fridge / Freezer
- W Wardrobe
- WD Washer Dryer
- S Storage
- H Heating interface unit



Type 2
1 Bedroom Apartment



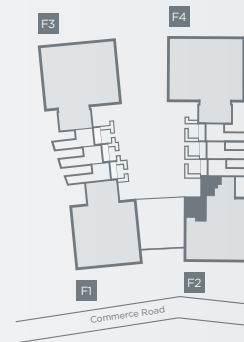
Type 3
1 Bedroom Apartment



Plots	Block	Floor
F015	F2	G

Room	Metric	Imperial
Kitchen / Living / Dining	6.0m x 5.9m	19'11" x 19'4"
Bedroom 1	4.2m x 3.9m	13'8" x 12'11"
GIA	75m ²	807ft ²

- D Dishwasher U Utility Cupboard F Fridge / Freezer
- W Wardrobe WD Washer Dryer S Storage
- H Heating interface unit



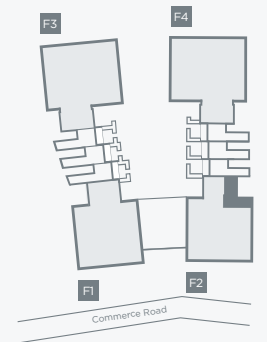
All floor plans in this brochure are for general guidance only. All room dimensions are subject to a plus/minus 5% tolerance. Measures are from plans and "as built" dimensions may vary. Sizes of balconies vary between apartments of the same type. Any dimensions shown are not intended to be used for carpet sizes, appliances, spaces or items of furniture. These particulars do not constitute any part of an offer or contract.



Plots	Block	Floor
F016	F2	G
F116	F2	1
F218	F2	2
F319	F2	3

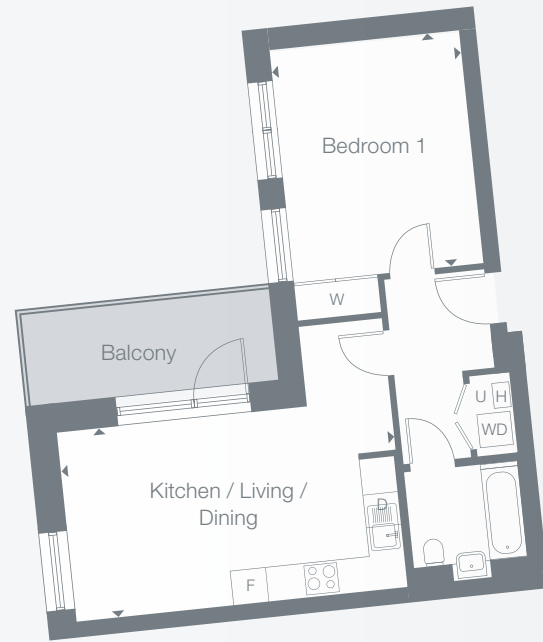
Room	Metric	Imperial
Kitchen / Living / Dining	6.2m x 3.5m	20'3" x 11'5"
Bedroom 1	4.1m x 3.5m	13'4" x 11'6"
GIA	52m ²	560ft ²

- D Dishwasher U Utility Cupboard F Fridge / Freezer
- W Wardrobe WD Washer Dryer S Storage
- H Heating interface unit



Type 4

1 Bedroom Apartment



Type 5

1 Bedroom Apartment

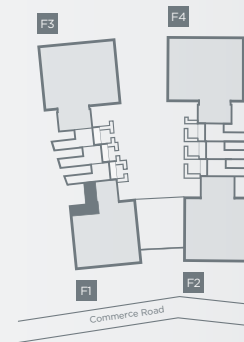


N

Plots	Block	Floor
F107	F1	1
F209	F1	2
F309	F1	3

Room	Metric	Imperial
Kitchen / Living / Dining	6.2m x 3.5m	20'3" x 11'6"
Bedroom 1	4.3m x 3.5m	14'1" x 11'6"
GIA	53m ²	570ft ²

- D Dishwasher U Utility Cupboard F Fridge / Freezer
- W Wardrobe WD Washer Dryer S Storage
- H Heating interface unit

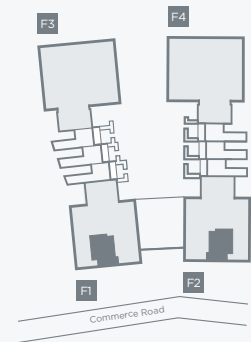


N

Plots	Block	Floor
F211	F1	2
F216*	F2	2
F311	F1	3
F317*	F2	3

Room	Metric	Imperial
Kitchen / Living / Dining	7.3m x 3.6m	24'0" x 11'10"
Bedroom 1	3.7m x 3.3m	11'11" x 10'8"
GIA	50m ²	538ft ²

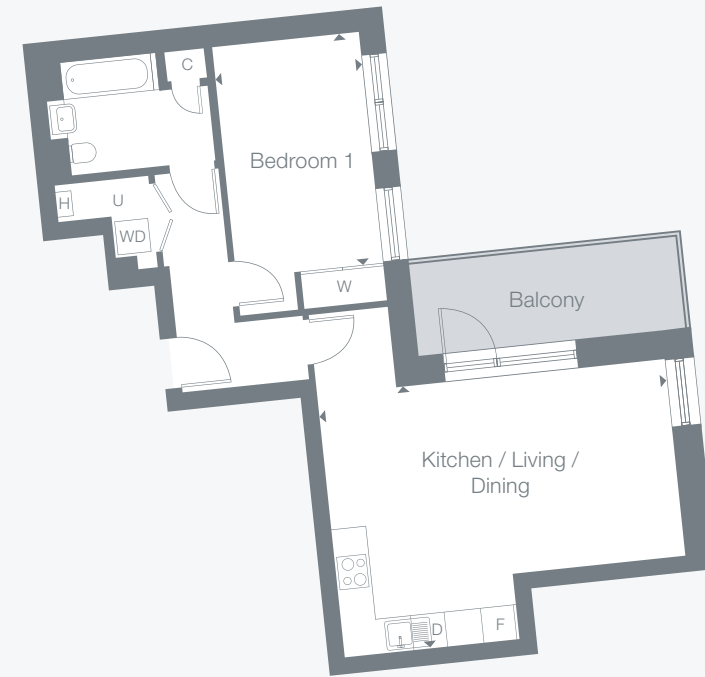
- D Dishwasher U Utility Cupboard F Fridge / Freezer
- W Wardrobe WD Washer Dryer S Storage
- H Heating interface unit * Plot is handed



Type 6
1 Bedroom Apartment



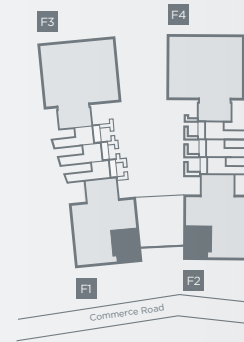
Type 7
1 Bedroom Apartment



Plots	Block	Floor
F212	F1	2
F215*	F2	2
F312	F1	3
F316*	F2	3
F411	F1	4
F414*	F2	4
F511	F1	5
F515*	F2	5

Room	Metric	Imperial
Kitchen / Living / Dining	7.3m x 3.7m	23'11" x 12'2"
Bedroom 1	3.4m x 3.1m	11'3" x 10'0"
GIA	53m ²	570ft ²

- D Dishwasher U Utility Cupboard F Fridge / Freezer
- W Wardrobe WD Washer Dryer S Storage
- H Heating interface unit * Plot is handed



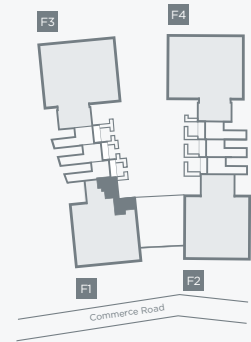
All floor plans in this brochure are for general guidance only. All room dimensions are subject to a plus/minus 5% tolerance. Measures are from plans and "as built" dimensions may vary. Sizes of balconies vary between apartments of the same type. Any dimensions shown are not intended to be used for carpet sizes, appliances, spaces or items of furniture. These particulars do not constitute any part of an offer or contract.



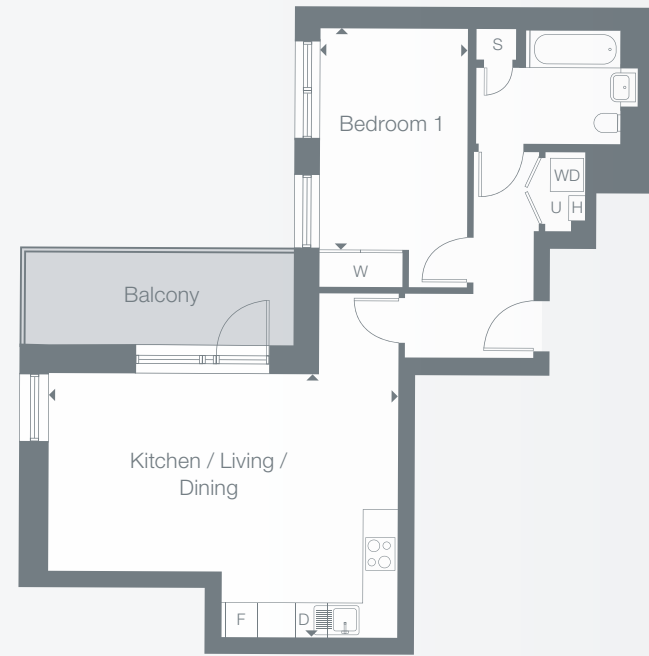
Plots	Block	Floor
F313	F1	3

Room	Metric	Imperial
Kitchen / Living / Dining	6.5m x 4.8m	21'2" x 15'10"
Bedroom 1	4.3m x 2.8m	14'0" x 9'0"
GIA	59m ²	635ft ²

- D Dishwasher U Utility Cupboard F Fridge / Freezer
- W Wardrobe WD Washer Dryer S Storage
- H Heating interface unit



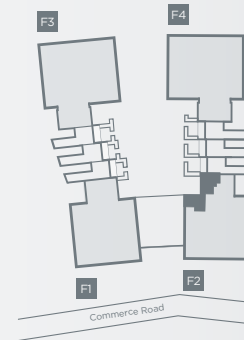
Type 8
1 Bedroom Apartment



Plots	Block	Floor
F320	F2	3

Room	Metric	Imperial
Kitchen / Living / Dining	6.5m x 4.5m	21'2" x 14'7"
Bedroom 1	4.1m x 2.8m	13'4" x 9'0"
GIA	57m ²	614ft ²

- D Dishwasher U Utility Cupboard F Fridge / Freezer
- W Wardrobe WD Washer Dryer S Storage
- H Heating interface unit



All floor plans in this brochure are for general guidance only. All room dimensions are subject to a plus/minus 5% tolerance. Measures are from plans and "as built" dimensions may vary. Sizes of balconies vary between apartments of the same type. Any dimensions shown are not intended to be used for carpet sizes, appliances, spaces or items of furniture. These particulars do not constitute any part of an offer or contract.

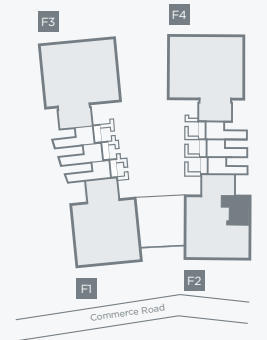
Type 9
1 Bedroom Apartment



Plots	Block	Floor
F416	F2	4
F517	F2	5

Room	Metric	Imperial
Kitchen / Living / Dining	8.4m x 3.5m	27'8" x 11'6"
Bedroom 1	5.3m x 3.9m	17'5" x 12'11"
GIA	63m ²	678ft ²

- D Dishwasher U Utility Cupboard F Fridge / Freezer
- W Wardrobe WD Washer Dryer S Storage
- H Heating interface unit



Type 10

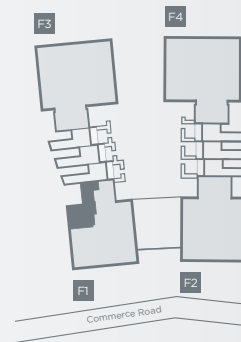
2 Bedroom Apartment



Plots	Block	Floor
F013	F1	G

Room	Metric	Imperial
Kitchen / Living / Dining	7.7m x 7.3m	25'4" x 24'1"
Bedroom 1	4.2m x 3.5m	13'7" x 11'6"
Bedroom 2	3.5m x 2.7m	11'7" x 8'11"
GIA	86m ²	926ft ²

- D Dishwasher U Utility Cupboard F Fridge / Freezer
- W Wardrobe WD Washer Dryer S Storage
- H Heating interface unit



All floor plans in this brochure are for general guidance only. All room dimensions are subject to a plus/minus 5% tolerance. Measures are from plans and "as built" dimensions may vary. Sizes of balconies vary between apartments of the same type. Any dimensions shown are not intended to be used for carpet sizes, appliances, spaces or items of furniture. These particulars do not constitute any part of an offer or contract.

Type 11

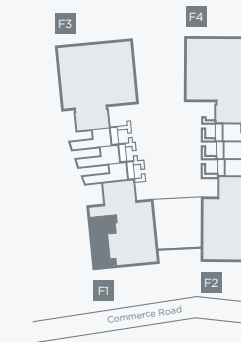
2 Bedroom Apartment



Plots	Block	Floor
F108	F1	1
F210	F1	2
F310	F1	3

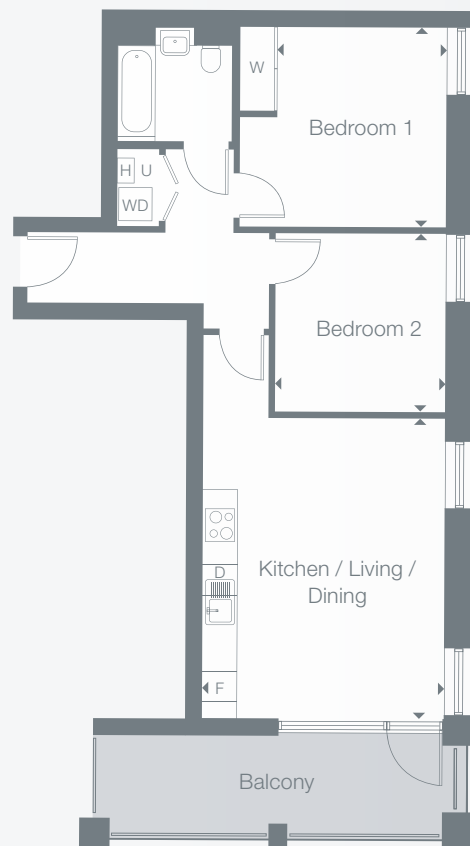
Room	Metric	Imperial
Kitchen / Living / Dining	5.6m x 4.5m	18'2" x 14'7"
Bedroom 1	4.8m x 3.7m	15'7" x 12'1"
Bedroom 2	3.3m x 3.1m	10'9" x 10'4"
GIA	72m ²	775ft ²

- D Dishwasher U Utility Cupboard F Fridge / Freezer
- W Wardrobe WD Washer Dryer S Storage
- H Heating interface unit



Type 12

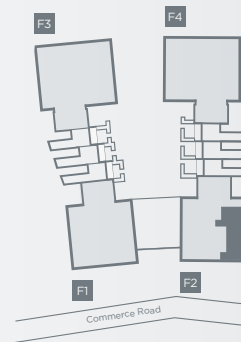
2 Bedroom Apartment



Plots	Block	Floor
F115	F2	1
F217	F2	2

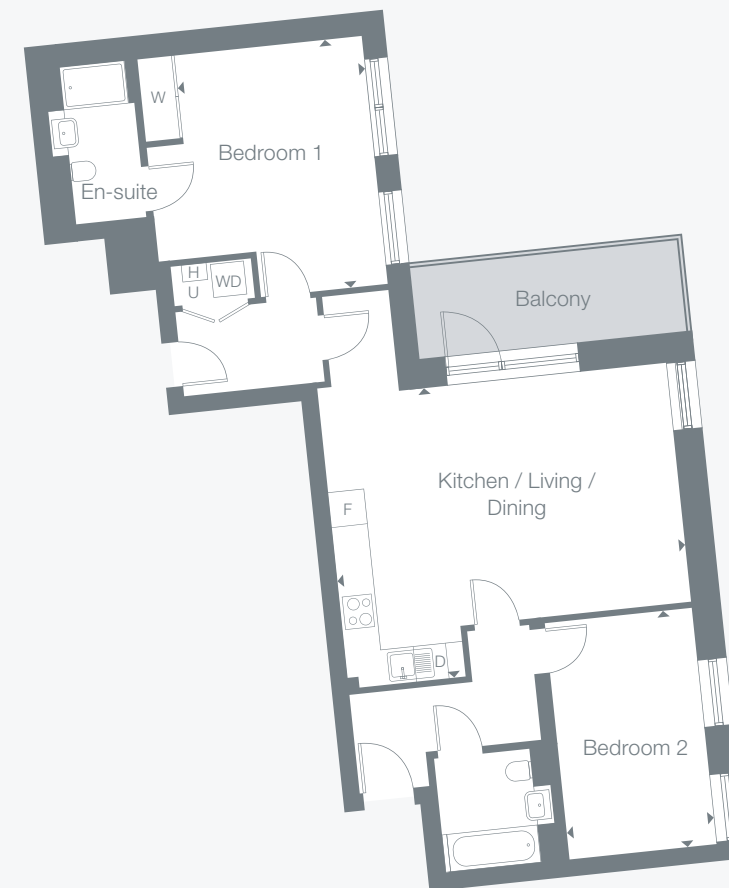
Room	Metric	Imperial
Kitchen / Living / Dining	5.6m x 4.5m	18'2" x 14'7"
Bedroom 1	3.7m x 3.1m	12'1" x 10'3"
Bedroom 2	3.3m x 3.1m	10'9" x 10'4"
GIA	67m ²	721ft ²

- D Dishwasher U Utility Cupboard F Fridge / Freezer
- W Wardrobe WD Washer Dryer S Storage
- H Heating interface unit



Type 13

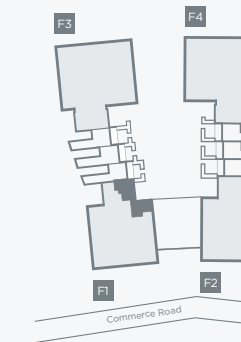
2 Bedroom Apartment



Plots	Block	Floor
F213	F1	2

Room	Metric	Imperial
Kitchen / Living / Dining	6.5m x 5.4m	21'2" x 17'7"
Bedroom 1	4.6m x 3.5m	15'1" x 11'4"
Bedroom 2	4.4m x 2.7m	14'5" x 8'11"
GIA	87m ²	936ft ²

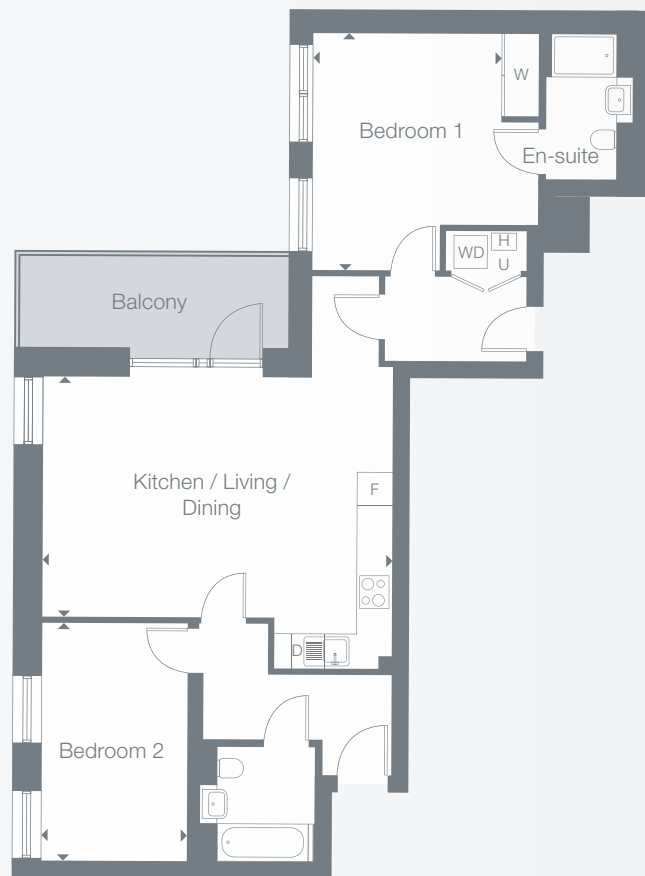
- D Dishwasher U Utility Cupboard F Fridge / Freezer
- W Wardrobe WD Washer Dryer S Storage
- H Heating interface unit



All floor plans in this brochure are for general guidance only. All room dimensions are subject to a plus/minus 5% tolerance. Measures are from plans and "as built" dimensions may vary. Sizes of balconies vary between apartments of the same type. Any dimensions shown are not intended to be used for carpet sizes, appliances, spaces or items of furniture. These particulars do not constitute any part of an offer or contract.

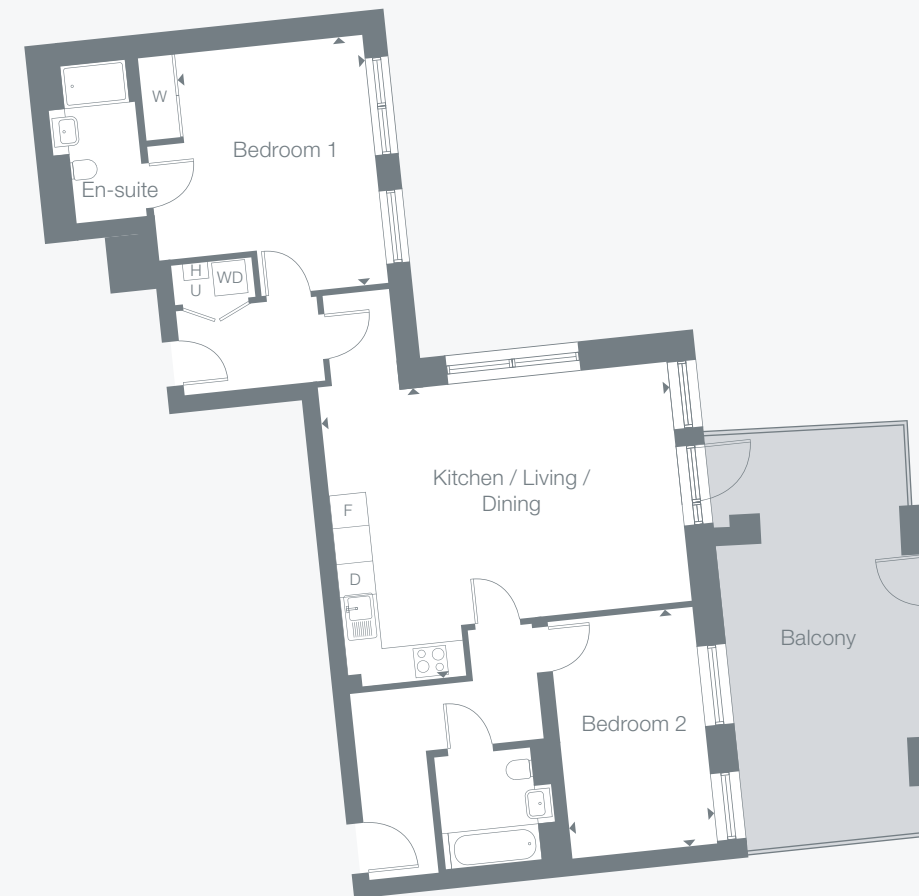
Type 14

2 Bedroom Apartment



Type 15

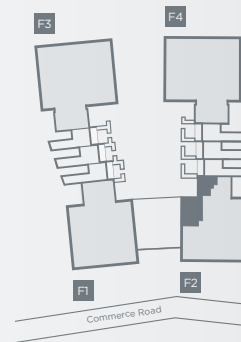
2 Bedroom Apartment



Plots	Block	Floor
F214	F2	2

Room	Metric	Imperial
Kitchen / Living / Dining	6.5m x 4.4m	21'2" x 14'6"
Bedroom 1	4.4m x 3.4m	14'5" x 11'4"
Bedroom 2	4.4m x 2.7m	14'5" x 8'9"
GIA	86m ²	926ft ²

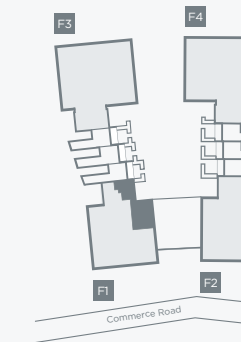
- [D] Dishwasher [U] Utility Cupboard [F] Fridge / Freezer
- [W] Wardrobe [WD] Washer Dryer [S] Storage
- [H] Heating interface unit



Plots	Block	Floor
F111	F1	1

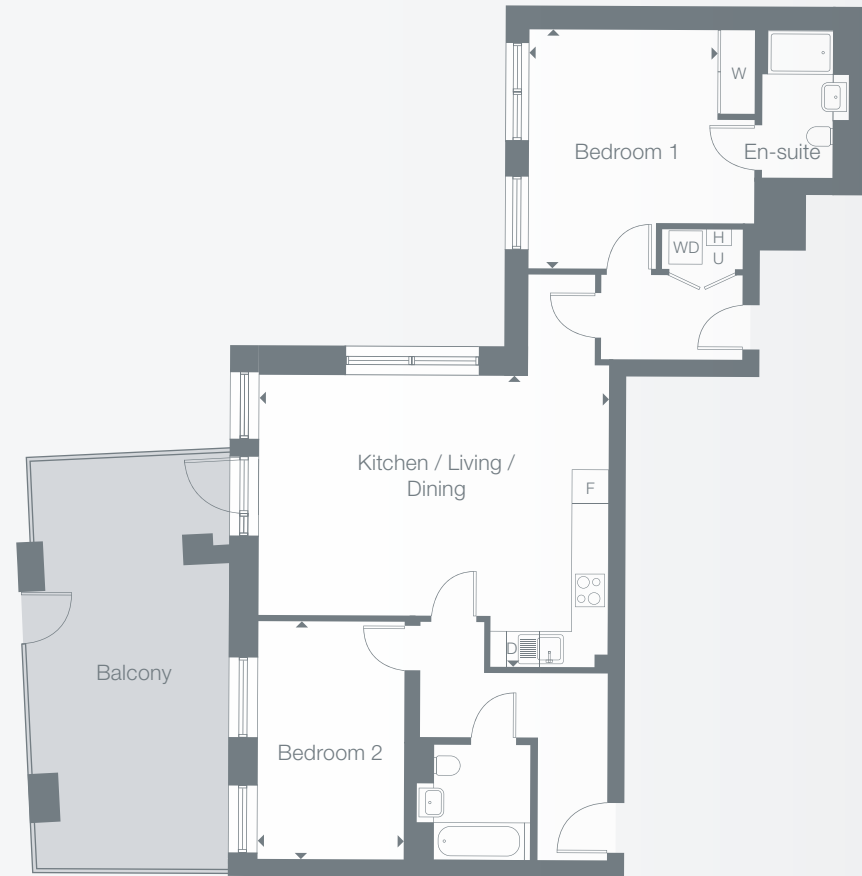
Room	Metric	Imperial
Kitchen / Living / Dining	6.5m x 5.4m	21'2" x 17'7"
Bedroom 1	4.6m x 3.5m	15'1" x 11'4"
Bedroom 2	4.4m x 2.7m	14'5" x 8'10"
GIA	89m ²	958ft ²

- [D] Dishwasher [U] Utility Cupboard [F] Fridge / Freezer
- [W] Wardrobe [WD] Washer Dryer [S] Storage
- [H] Heating interface unit



Type 16

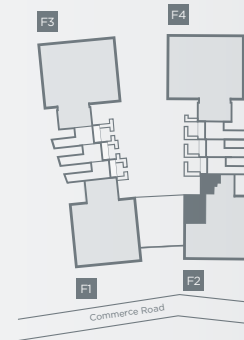
2 Bedroom Apartment



Plots	Block	Floor
F112	F2	1

Room	Metric	Imperial
Kitchen / Living / Dining	6.5m x 5.4m	21'2" x 17'7"
Bedroom 1	4.4m x 3.5m	14'5" x 11'4"
Bedroom 2	4.4m x 2.7m	14'5" x 8'10"
GIA	87m ²	936ft ²

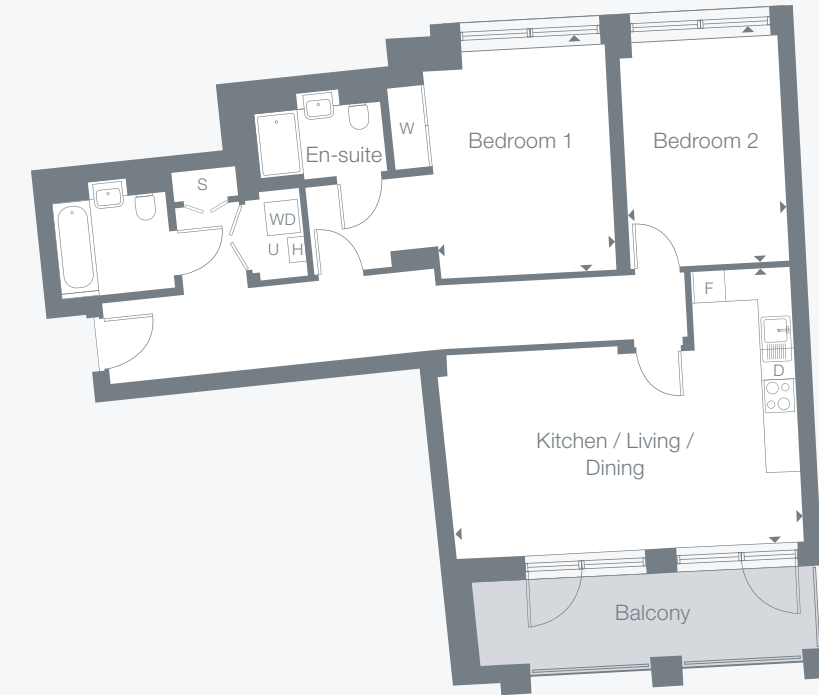
- D Dishwasher U Utility Cupboard F Fridge / Freezer
- W Wardrobe WD Washer Dryer S Storage
- H Heating interface unit



All floor plans in this brochure are for general guidance only. All room dimensions are subject to a plus/minus 5% tolerance. Measures are from plans and "as built" dimensions may vary. Sizes of balconies vary between apartments of the same type. Any dimensions shown are not intended to be used for carpet sizes, appliances, spaces or items of furniture. These particulars do not constitute any part of an offer or contract.

Type 17

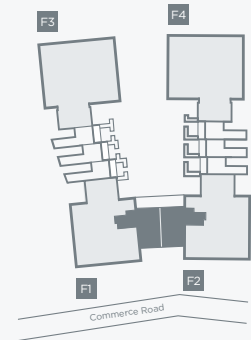
2 Bedroom Apartment



Plots	Block	Floor
F314	F1	3
F315*	F2	3

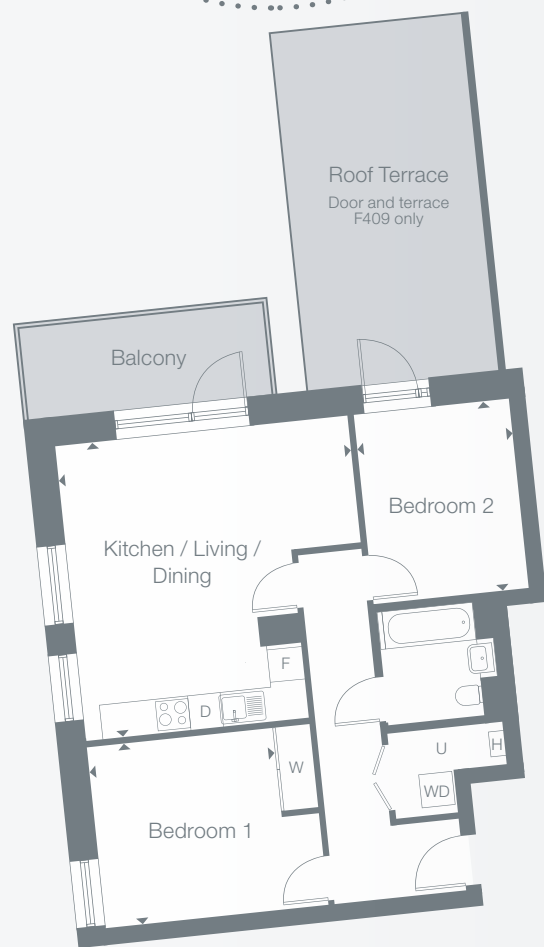
Room	Metric	Imperial
Kitchen / Living / Dining	6.4m x 5.1m	21'1" x 16'8"
Bedroom 1	4.4m x 3.3m	14'4" x 10'8"
Bedroom 2	4.4m x 2.9m	14'4" x 9'7"
GIA	90m ²	969ft ²

- D Dishwasher U Utility Cupboard F Fridge / Freezer
- W Wardrobe WD Washer Dryer S Storage
- H Heating interface unit * Plot is handed



Type 18

2 Bedroom Apartment



Plots	Block	Floor
F409	F1	4
F509	F1	5

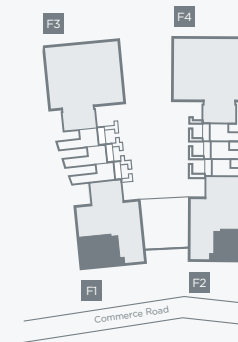
Room	Metric	Imperial
Kitchen / Living / Dining	5.5m x 5.4m	17'11" x 17'10"
Bedroom 1	3.4m x 3.4m	11'3" x 11'0"
Bedroom 2	3.5m x 2.9m	11'6" x 9'5"
GIA	69m ²	743ft ²

- D Dishwasher U Utility Cupboard F Fridge / Freezer
- W Wardrobe WD Washer Dryer S Storage
- H Heating interface unit

All floor plans in this brochure are for general guidance only. All room dimensions are subject to a plus/minus 5% tolerance. Measures are from plans and "as built" dimensions may vary. Sizes of balconies vary between apartments of the same type. Any dimensions shown are not intended to be used for carpet sizes, appliances, spaces or items of furniture. These particulars do not constitute any part of an offer or contract.

Type 19

2 Bedroom Apartment



Plots	Block	Floor
F410	F1	4
F415*	F2	4
F510	F1	5
F516*	F2	5

Room	Metric	Imperial
Kitchen / Living / Dining	7.3m x 4.5m	24'0" x 14'7"
Bedroom 1	4.9m x 2.5m	15'11" x 8'3"
Bedroom 2	3.7m x 3.1m	12'2" x 10'2"
GIA	85m ²	915ft ²

- D Dishwasher U Utility Cupboard F Fridge / Freezer
- W Wardrobe WD Washer Dryer S Storage
- H Heating interface unit * Plot is handed

Type 20

3 Bedroom Apartment



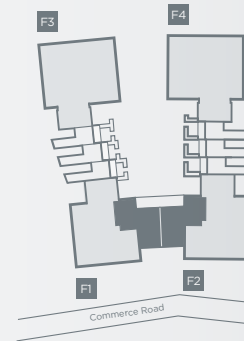
Plots	Block	Floor
F412	F1	4
F413*	F2	4

Room	Metric	Imperial
Kitchen / Living / Dining	6.4m x 5.5m	21'1" x 18'1"
Bedroom 1	6.4m x 3.1m	21'1" x 10'3"
Bedroom 2	4.3m x 3.3m	14'3" x 10'9"
Bedroom 3	3.8m x 3.1m	12'3" x 10'1"

GIA 119m² 1281ft²

- D Dishwasher U Utility Cupboard F Fridge / Freezer
- W Wardrobe WD Washer Dryer S Storage

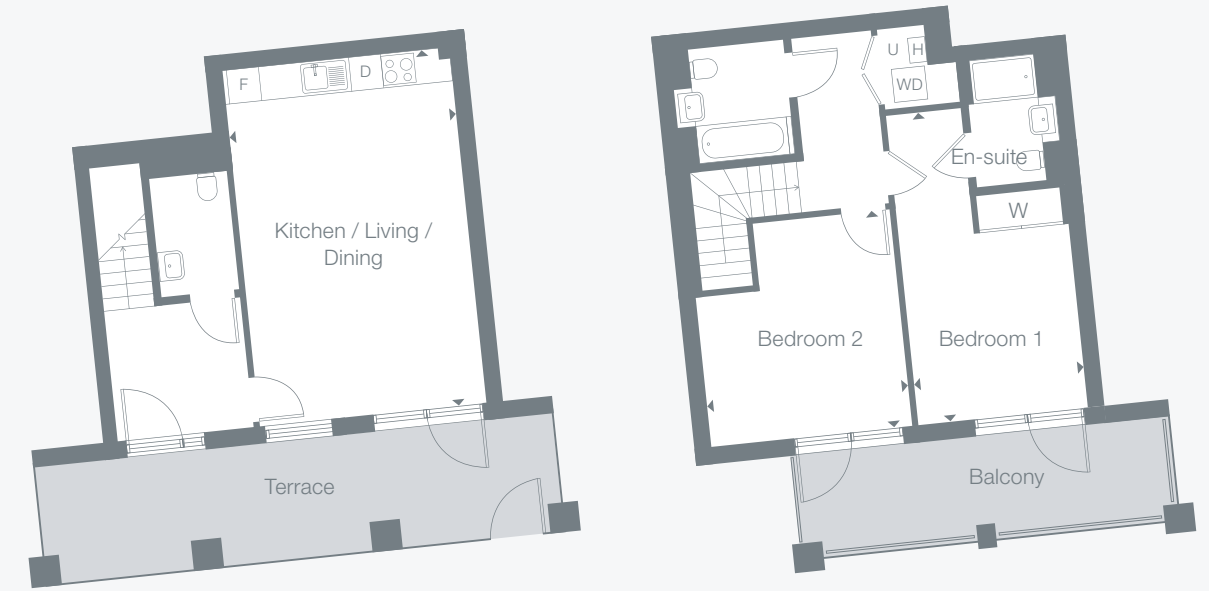
H Heating interface unit * Plot is handed



All floor plans in this brochure are for general guidance only. All room dimensions are subject to a plus/minus 5% tolerance. Measures are from plans and "as built" dimensions may vary. Sizes of balconies vary between apartments of the same type. Any dimensions shown are not intended to be used for carpet sizes, appliances, spaces or items of furniture. These particulars do not constitute any part of an offer or contract.

Type 21

2 Bedroom Duplex



Ground floor

1st floor

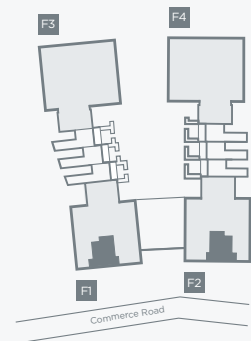


Plots	Block	Floor
F109	F1	G & 1
F114*	F2	G & 1

Room	Metric	Imperial
Kitchen / Living / Dining	6.6m x 4.2m	21'8" x 13'9"
Bedroom 1	5.7m x 3.1m	18'10" x 10'3"
Bedroom 2	4.0m x 3.7m	13'2" x 12'3"
GIA	91m ²	980ft ²

- D Dishwasher U Utility Cupboard F Fridge / Freezer
- W Wardrobe WD Washer Dryer S Storage

H Heating interface unit * Plot is handed



Type 22

3 Bedroom Duplex



Ground floor

1st floor

N

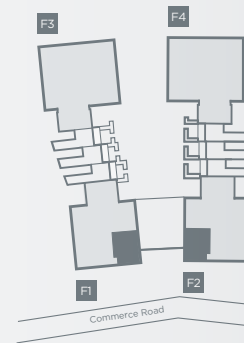
Plots	Block	Floor
F110	F1	G & 1
F113*	F2	G & 1

Room	Metric	Imperial
Kitchen / Living / Dining	7.3m x 5.1m	23'10" x 16'7"
Bedroom 1	3.2m x 2.8m	10'5" x 9'2"
Bedroom 2	3.6m x 3.5m	11'11" x 11'5"
Bedroom 3	3.7m x 2.5m	12'2" x 8'2"

GIA 107m² 1151ft²

- D Dishwasher U Utility Cupboard F Fridge / Freezer
- W Wardrobe WD Washer Dryer S Storage

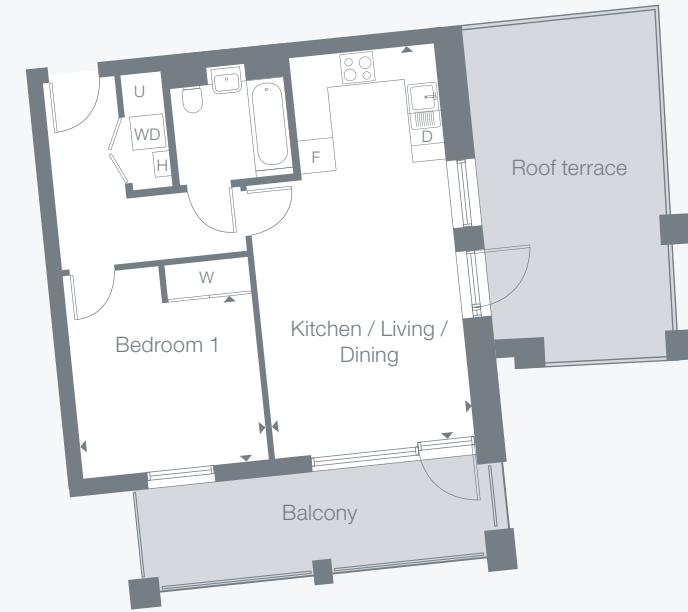
H Heating interface unit * Plot is handed



All floor plans in this brochure are for general guidance only. All room dimensions are subject to a plus/minus 5% tolerance. Measures are from plans and "as built" dimensions may vary. Sizes of balconies vary between apartments of the same type. Any dimensions shown are not intended to be used for carpet sizes, appliances, spaces or items of furniture. These particulars do not constitute any part of an offer or contract.

Type 23

1 Bedroom Penthouse



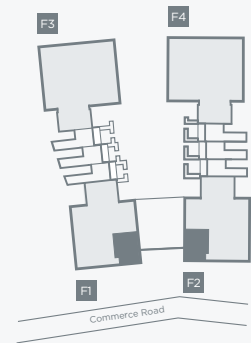
N

Plots	Block	Floor
F603	F1	6
F604*	F2	6

Room	Metric	Imperial
Kitchen / Living / Dining	7.3m x 3.7m	23'11" x 12'2"
Bedroom 1	3.4m x 3.1m	11'3" x 10'0"
GIA	53m ²	570ft ²

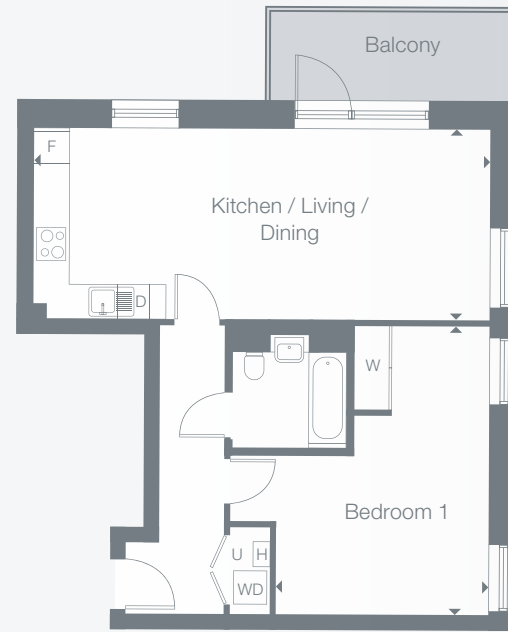
- D Dishwasher U Utility Cupboard F Fridge / Freezer
- W Wardrobe WD Washer Dryer S Storage

H Heating interface unit * Plot is handed



Type 24

1 Bedroom
Penthouse



Type 25

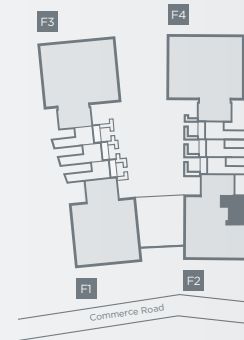
2 Bedroom
Penthouse



Plots	Block	Floor
F606	F2	6

Room	Metric	Imperial
Kitchen / Living / Dining	8.4m x 3.5m	27'8" x 11'6"
Bedroom 1	5.3m x 3.9m	17'5" x 12'8"
GIA	63m ²	678ft ²

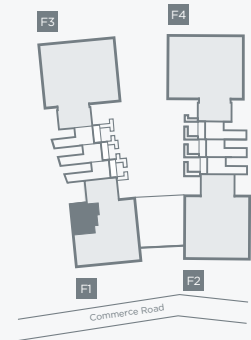
- D Dishwasher U Utility Cupboard F Fridge / Freezer
- W Wardrobe WD Washer Dryer S Storage
- H Heating interface unit



Plots	Block	Floor
F601	F1	6

Room	Metric	Imperial
Kitchen / Living / Dining	5.5m x 5.4m	17'11" x 17'10"
Bedroom 1	3.4m x 3.4m	11'3" x 11'0"
Bedroom 2	3.5m x 2.9m	11'6" x 9'5"
GIA	69m ²	743ft ²

- D Dishwasher U Utility Cupboard F Fridge / Freezer
- W Wardrobe WD Washer Dryer S Storage
- H Heating interface unit



Type 26

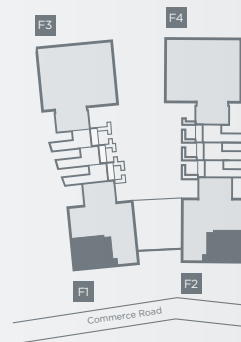
2 Bedroom
Penthouse



Plots	Block	Floor
F602	F1	6
F605*	F2	6

Room	Metric	Imperial
Kitchen / Living / Dining	7.3m x 4.5m	24'0" x 14'7"
Bedroom 1	4.9m x 2.5m	15'11" x 8'3"
Bedroom 2	3.7m x 3.1m	12'2" x 10'2"
GIA	85m ²	915ft ²

- D Dishwasher U Utility Cupboard F Fridge / Freezer
- W Wardrobe WD Washer Dryer S Storage
- H Heating interface unit * Plot is handed



All floor plans in this brochure are for general guidance only. All room dimensions are subject to a plus/minus 5% tolerance. Measures are from plans and "as built" dimensions may vary. Sizes of balconies vary between apartments of the same type. Any dimensions shown are not intended to be used for carpet sizes, appliances, spaces or items of furniture. These particulars do not constitute any part of an offer or contract.

Type 27

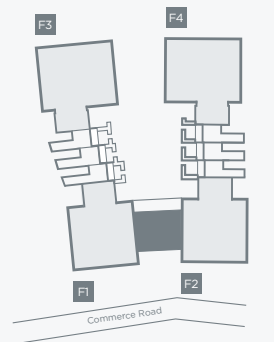
3 Bedroom
Penthouse



Plots	Block	Floor
F513	F1&2	5

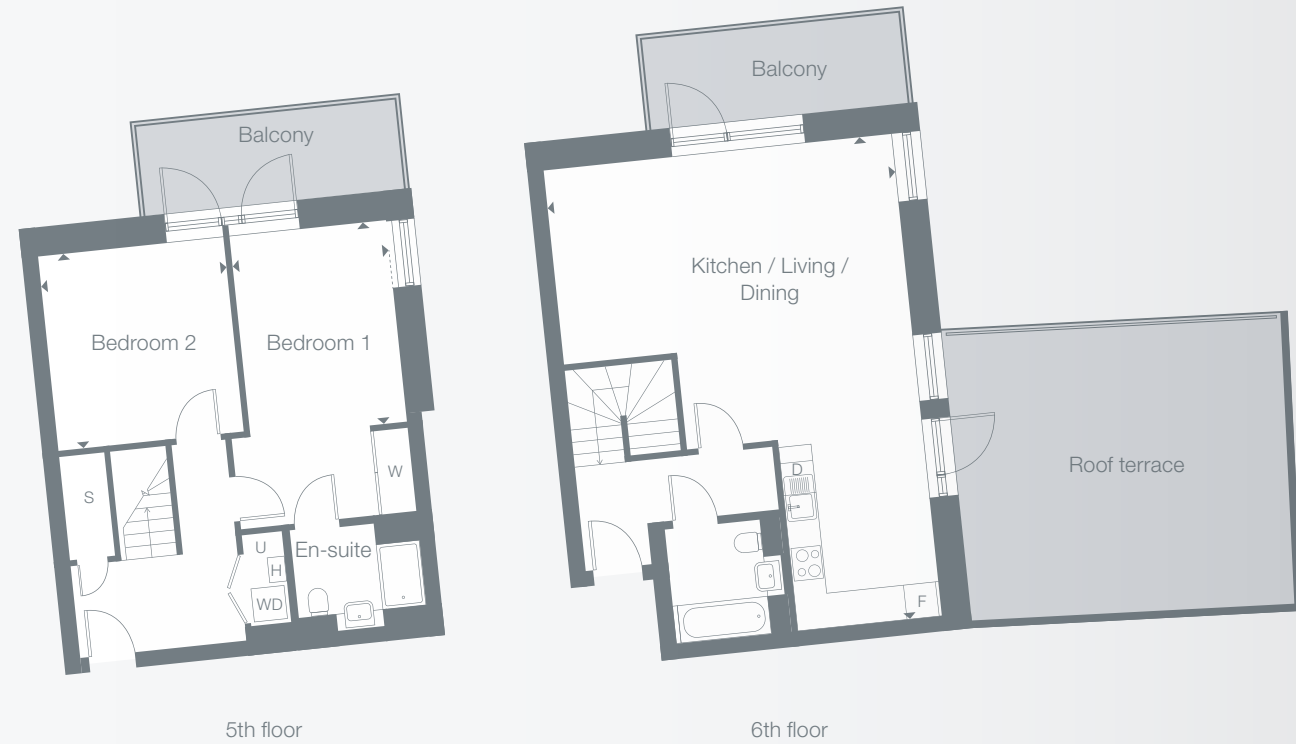
Room	Metric	Imperial
Kitchen / Living / Dining	7.2m x 5.8m	23'7" x 19'2"
Bedroom 1	3.4m x 3.0m	11'3" x 9'11"
Bedroom 2	3.7m x 3.4m	12'1" x 11'3"
Bedroom 3	4.1m x 3.4m	13'4" x 11'3"
GIA	127m ²	1367ft ²

- D Dishwasher U Utility Cupboard F Fridge / Freezer
- W Wardrobe WD Washer Dryer S Storage
- H Heating interface unit



Type 28

2 Bedroom Duplex
Penthouse



With So Resi, you buy your own home in your own way. You start with a share that's right for you, then you can buy extra shares over time, so it's all manageable and suits your income.

You can sell your share at any time if you decide to move on.

We're here to help

Whatever your needs, we're on hand to help at every stage. First we'll help you understand all the costs and work out what's affordable for you. If you decide to go ahead, we'll be there to answer your questions. And in the future, we can help you with buying a bigger share of your home, or with selling up if it's time for a change.

Email sales@soresi.co.uk or visit www.soresi.co.uk

Working in partnership with



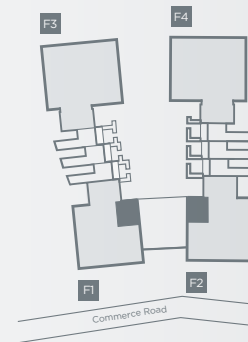
You start by buying between 25% and 75% of your So Resi home. That means your monthly mortgage payments and deposit are smaller than they would be if you bought your home outright. There are two other monthly payments for your So Resi home. One is the So Resi payment for the share of your home that Thames Valley Housing owns. The other is the service charge, which pays to look after the building you live in. There are also the usual other costs, like household utility bills. You can choose to buy a bigger share of your So Resi home in the future, and even own 100%. The bigger the share you own, the lower your So Resi payment will be.

TVH has taken all reasonable care in the preparation of the information given in this brochure. However, this information is subject to change and has been prepared solely for the purpose of providing general guidance. TVH does not warrant the accuracy or completeness of this information. Particulars are given for illustrative purposes only. TVH undertakes continuous product development and any information given relating to our products may vary from time to time. The information and particulars set out within this brochure do not constitute part of a formal offer invitation or contract to acquire the relevant property. For the reasons mentioned above, no information contained in this brochure is to be relied upon. In particular, all plans prospectus, descriptions, dimensions and measurements are approximate and provided for guidance only. Such information is given without responsibility on the part of TVH.

N

Plots	Block	Floor	Room	Metric	Imperial
F512	F1	5 & 6	Kitchen / Living / Dining	9.0m x 6.5m	29'4" x 21'2"
F514*	F2	5 & 6	Bedroom 1	3.7m x 2.9m	12'3" x 9'5"
			Bedroom 2	3.6m x 3.4m	11'10" x 11'3"
			GIA	99m ²	1066ft ²

- D Dishwasher U Utility Cupboard F Fridge / Freezer
- W Wardrobe WD Washer Dryer S Storage
- H Heating interface unit * Plot is handed



All floor plans in this brochure are for general guidance only. All room dimensions are subject to a plus/minus 5% tolerance. Measures are from plans and "as built" dimensions may vary. Sizes of balconies vary between apartments of the same type. Any dimensions shown are not intended to be used for carpet sizes, appliances, spaces or items of furniture. These particulars do not constitute any part of an offer or contract.

